

## The Art of Forbidden Quest

The artwork for Forbidden Quest is created with the help of generative AI and advanced digital processes using several different applications. Below is a sample of the process.

**Step 1:** Prompt AI with detailed character description. Characters are first generated in a simple pose against a white background so the AI can focus its attention on the details of just the character.

*Prompt: digital painterly realistic character, full body portrait, brave young warrior male standing resolute, tall, serious, realistic human body proportions, one hand on his hip, holding a silver sword in the other hand, two brown horns on his head, form-fitting leggings made of olive green and black leather panels crudely stitched together, lace-up olive green and black leather vest, black leather boots, leather elbow and knee pads, leather arm bands, black leather belt with round radiant green gemstone buckle, tousled natural red hair, light brown skin, freckles, feather necklace and earrings, black warrior headband, plain off-white background.*



This image was created using the Nano Banana 2 AI model.

**Step 2:** Fix details in output image. I removed the buttons on his leather arm band and added additional buttons on his belt. Application: Eraser and cloning tools in InPixio Studio 12.



**Step 3:** Use AI to generate a character sheet depicting the character in multiple poses.

*Prompt: Create a character sheet of this character: front, back and 3/4 side, no labels, digital painterly realistic character, full body portrait, brave young warrior male standing resolute, tall, serious, realistic human body proportions, holding a silver sword in the other hand, two brown horns on his head, form-fitting leggings made of olive green and black leather panels crudely stitched together, lace-up olive green and black leather vest, black leather boots, leather elbow and knee pads, leather arm bands, black leather belt with round radiant green gemstone buckle, tousled natural red hair, light brown skin, freckles, feather necklace and earrings, black warrior headband, plain off-white background.*



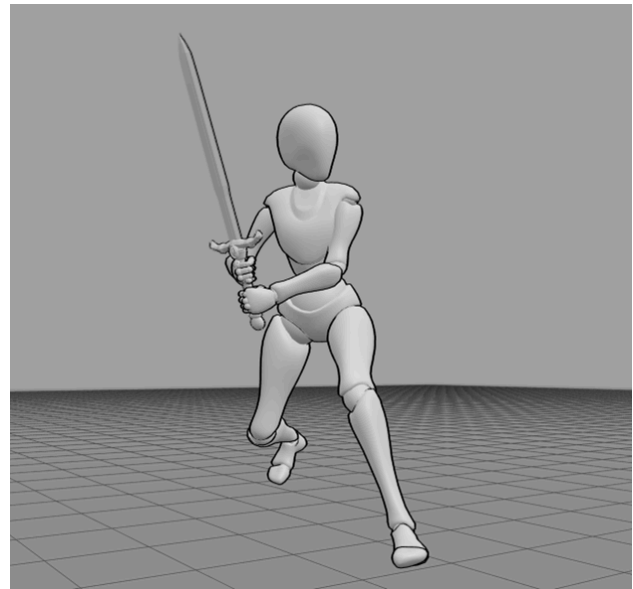
**Step 4:** Fix details in output image. In this case, the AI added laces down the back of his vest. These were removed using the eraser tool in InPixio Studio 12. This was an easy fix. Often the character sheet requires more extensive manual artistic touchup.

Corrected image (laces removed on back of vest):



**Step 5:** Adjust the pose. A pose reference was generated in Posemy.art. Then, both the character sheet above and the pose reference shown below were fed into the Nano Banana Pro AI model with the following prompt:

*Show this character in the exact pose as the pose reference model, lunging forward with a sword, digital painterly realism, tall, fierce expression, eye contact, realistic human body proportions, holding a silver sword, two brown horns on his head, form-fitting leggings made of olive green and black leather panels crudely stitched together, lace-up olive green and black leather vest, black leather boots, leather elbow and knee pads, leather arm bands, black leather belt with round radiant green gemstone buckle, tousled natural red hair, light brown skin, freckles, feather necklace and earrings, black warrior headband, plain off-white background.*



**Step 6:** Create additional characters for the scene using a process similar to the one outlined above. In this case, a character was created to represent the man's son.



**Step 7:** The two character images (the father and son) were fed into the Nano Banana Pro AI model with the following prompt:

*Digital painterly semi realistic art depicting these two characters, the central focus of the image is the fierce and brave father wielding a silver sword, guarding his son who is afraid, fierce expression, full body, eye contact, realistic human body proportions, the son is hiding behind his father with one hand on his father's hip, eye contact, both characters have brown horns on their head, form-fitting leggings made of olive green and black leather panels crudely stitched together, lace-up olive green and black leather vest, black leather boots, leather elbow and knee pads, leather arm bands, black leather belt with round radiant green gemstone buckle, tousled natural red hair, light brown skin, freckles, feather necklace and earrings, black warrior headband, natural forest background with tall pines, mossy boulders, wooden cottage, thatched roof, simple wood construction, primitive, scenic.*



Output image (after 16 different attempts).

**Step 8:** The background was extended on the right side of the image so the characters would be properly centered in the image. Applications in OpenArt.ai were used to extend the background.



**Step 9:** (Not pictured) Details in the output image were fixed in Adobe PhotoStudio. The laces on the boy's vest were redrawn. Random lines on the man's arm cuff were removed. Stitches were added on the man's pants.

**Step 10:** The above image was fed through a generative AI image upscaler (Magnific) to clean up the details and increase image resolution using the same prompt as before.

*Digital painterly semi realistic art depicting these two characters, the central focus of the image is the fierce and brave father wielding a silver sword, guarding his son who is afraid, fierce expression, full body, eye contact, realistic human body proportions, the son is hiding behind his father with one hand on his father's hip, eye contact, both characters have brown horns on their head, form-fitting leggings made of olive green and black leather panels crudely stitched together, lace-up olive green and black leather vest, black leather boots, leather elbow and knee pads, leather arm bands, black leather belt with round radiant green gemstone buckle, tousled natural red hair, light brown skin, freckles, feather necklace and earrings, black warrior headband, natural forest background with tall pines, mossy boulders, wooden cottage, thatched roof, simple wood construction, primitive, scenic.*



**Step 11:** The final image was cropped to a square aspect ratio to better fit the frame on the trading card.



This image may appear in Series 3 of Forbidden Quest.